



Temple Beth Shalom of the West Valley **SHOFAR**

May 2026 IYAR-SIVAN, 5786





A MESSAGE FROM RABBI DANA EVAN KAPLAN

Please check out Rabbi Kaplan's blog for photos, interesting notes and more at danakaplan.com.



We will celebrate Shavuot as part of our Friday night Shabbat service on May 22. We are celebrating God's having given us the Torah, which we have been privileged to study and debate for more than 3,000 years.

Among the major Jewish festivals, Shavuot is perhaps the most understated — and yet, in many ways, the most profound. Unlike Passover, with its rich home rituals including the Passover Seder using our Haggadah, or Sukkot, with its visible symbols including the four species and the Sukkah, Shavuot has few external observances. And yet it commemorates one of the defining moments in Jewish history: the giving of the Torah at Mount Sinai.

Shavuot marks the culmination of a journey that begins with Passover. If Passover celebrates physical freedom—the Exodus from Egypt—then Shavuot celebrates spiritual freedom: the moment when a newly liberated people of Israel received a religious framework to guide our lives.

Freedom without purpose can be empty; Shavuot reminds us that true freedom is found in commitment to Judaism and manifesting that commitment through study of Torah.

CONTINUED NEXT PAGE

RABBI KAPLAN'S MESSAGE CONTINUED FROM PAGE 2

At the heart of Shavuot is the idea of revelation. According to tradition, every Jew—past, present, and future—stood at Sinai. Revelation is not only a historical event but an ongoing experience. Each generation is called to hear the Torah anew, to interpret it, and to apply its teachings to the realities of contemporary life. Shavuot is not just about what happened once, but about what continues to happen whenever we engage deeply with Jewish learning.

The custom of Tikkun Leil Shavuot, staying up all night, expresses the idea that receiving Torah is not passive; it requires effort, curiosity, and dedication. The Torah is not simply given—it must be continually received.

To mark this occasion without literally staying up all night, we're going to have a shortened Shabbat service combined with a number of special prayers for Shavuot, and then have a short study session, focusing on the giving of the Torah while we eat dairy products. Torah is poetically compared to “milk and honey,” so dairy symbolizes its sweetness.

Shavuot is linked to the Book of Ruth, which we read on this holiday. Ruth's story is one of choice and commitment. She voluntarily joins the Jewish people and embraces its values, declaring, “Your people shall be my people, and your God my God.” Ruth's story reminds us that Jewish identity is not only inherited—it is also chosen and reaffirmed through our actions and commitments.

Finally, Shavuot invites us to reflect on the relationship between study and action. The Torah is not merely a text to be learned; it is a guide for living. The value of responsibility toward others—so central to Jewish teaching—are meant to shape our daily lives. In that sense, Shavuot challenges us: How are we living out the teachings we have received?

Shavuot offers a moment to listen — to hear again the call of Sinai. It reminds us that Judaism is not only about memory, but about renewal; not only about tradition, but about ongoing engagement. Each year, we stand again at Sinai, with the opportunity to recommit ourselves to a life of meaning.

Shavout will be celebrated during the Friday night service at 7 p.m. May 22, and will be followed by a study service and dairy Oneg in the social hall.



NOTES FROM CANTOR BARUCH KORITAN

"Blessed is our God who created us for God's glory, who distinguished us from erring, who gave us the Torah of truth." This reassuring liturgic prayer is sung in the Hassidic tradition on Shavuot, which begins at sundown on May 21st this year. In Harry Coopersmith's book, "More of the Songs We Sing," he indicates this chanted prayer is to be sung "ecstatically." Why not? How many peoples on this planet were given such a gift as our Torah?

The lyrics to the "Shavuot Hymn" by Zangwill further express our gratefulness for such a gift: *"Could we with ink the ocean fill; were every blade of grass a quill, were the world of parchment made and every man a scribe by trade, to write of the love of God above would drain the ocean dry; nor would the scroll contain the whole, though stretched from sky to sky."* This holiday has music filled with wonder and awe that help lead us, perhaps unknowingly, to our higher selves. The dances, also, as recreated in modern melodies, such as "Shibolet Basadah" (Stalk in the Field) are aural windows for the soul.

Another aspect of the harvest holiday is the recitation of the Book of Ruth. As a convert to Judaism who pleads to her Jewish mother-in-law, Naomi, ("Entreat me not to leave thee, whither thou goest") remains a source of religious and musical inspiration for Jews, and, subsequently, Christians. For all of us, the delicious music of this early harvest drives us forward to sow the seeds of our yearning to produce a crop of newfound wisdom that will 'open the gates' of righteousness when the next harvest yields its glorious gifts. Several months later, we are fully ripened, and can honestly pray to find our true selves included in the Book of Life.

Incredibly, Shavuot was originally called "Festival of the First Fruits." Folk songs, along with mysticism, abound to glorify and preserve this agricultural event with its original revelations: Our Torah was revealed at this "once in a world happening!" We stood at the foot of Mount Sinai as it spewed volcanic splendor as a backdrop for Moses when he presented the Ten Commandments. Had Rodgers and Hammerstein II been celebrating Shavuot instead of helping frightened Austrian children get through a thunderstorm (not that different from Sinai in mood), "My Favorite Things" may have begun: "Blintzes and kugel, rugelach and cheesecake." Many secular Jews only remember the holiday as a time for dairy foods, fattening or diet. Shavuot is, of course, so much more --- not in calories, but in major significance. With music added, we surely will reach the joy of feeling God's love. Our true desserts are on their way when we will voice "Chan Sameach!"

Baruch Koritan



Richard Bass

Board Member

I have been a member of Temple Beth Shalom of the West Valley for about 3 ½ years and have found a home of like-minded individuals. For about 30 years, my wife and I traveled to Phoenix for a week or two. We always stayed on the east side of the Valley in the Scottsdale area. I thought that the west side was still sage brush, saguaros and coyotes. Little did I realize that this part of the Valley had a vibrant population and cultural life with a very nice synagogue.

I first encountered TBS from a newspaper article about the seminars that TBS gives regarding aspects of Jewish life and culture. The courses that I encountered were well done and stimulated my thought process. So I came for Friday night services and found a home. The congregation was embracing and friendly. Rabbi Kaplan is personable, approachable and entertaining during services and during the courses. He is an excellent teacher and Rabbi. I became a member in 2022. With time and persuasion, I became a member of the Adult Education Committee. This past year, I was invited to become a member of our TBS board. Having been on a temple board in my prior home of Springfield, Illinois, I understood the time commitment involved. I am also a member of the Social Action Committee and the Fundraising Committee. I'm still in the learning stage as a board member and hopefully I make contributions to the discussions during our meetings.

Let me tell you about myself. I was born and raised in Chicago. All of my schooling including medical school (University of Illinois) and my residency in otolaryngology (Northwestern) were also in Chicago. Except for two years in the Army as an otolaryngologist in Kentucky, my life and career centered in Illinois. After the Army, we moved to Springfield. I had a private practice but later moved to the Southern Illinois University School of Medicine in the Department of Otolaryngology (Ear, Nose and Throat). I had a great time treating patients, doing surgery and teaching residents, medical students and nurses. My wife, Lois, passed away in 2016. My daughter, Alyson, and her family moved from the Springfield area to Glendale in 2022 so I decided it was time to plant my roots in a different place.



LOOKING FOR A FEW INDIVIDUALS TO GET INVOLVED WITH THE TEMPLE BOARD OF DIRECTORS

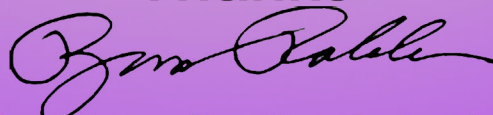
Nominations for the Board are now open. If you'd like to be a benefit to the Temple and help with the normal tasks of running the Temple, you are more than welcome to submit your name. You **don't** have to fill out any forms, just contact me.

Upon submission, I will give you a call to discuss the opportunities and find your area of expertise.

Please contact me at:
Russ.QED@gmail.com
602 370-2821

I am excited to have new Board Members for next year and will work with you so that you will be comfortable in whatever endeavor you choose.

Thanks



Board Member, Parliamentarian, Past President and a 37 year member of TBS

TBS SECURITY STATEMENT

Due to the current national risk assessment for Jewish organizations and facilities, Wasson Security and the Temple Beth Shalom Safety & Security Committee have collaborated to establish the following protocols for our security officers to improve our worship experience and to allow them to more fully focus on their primary duty of safeguarding the synagogue and its members:

- 1. No-one will be allowed to enter the synagogue more than 20 minutes after services have begun.**
- 2. The officers are not to engage in casual conversations while on duty.**
- 3. The officers will not be available to carry items into the synagogue. A cart will be placed close to the entrance in case anyone should require assistance moving heavy or bulky items inside.**
- 4. The officers will not be available to remove items from congregant's vehicles unless their assistance is required for an item that is unusually heavy.**
- 5. The officers are being tasked with keeping our front door closed at all times unless someone is actively entering or exiting the building. They will gently remind us to move across the threshold of the door and not pause to chat with other members while causing the door to remain open longer than necessary.**

As part of our continuing effort to improve safety and security for members of Temple Beth Shalom, we are requesting that all members begin wearing their member badge to services and special events. This will allow our security guards to more quickly identify members and facilitate their entry into the building.

If you need a badge, please contact Carmen at carmenberkowitz@msn.com or 847-731-3730. The fee for a new badge is \$10.

As an added reminder, once you have stepped into the foyer of the synagogue please remember to continue moving forward as your physical presence within approximately 8 feet of the front door will not allow the locking mechanism to engage.

Thank you for your cooperation as we strive to maintain a safe and secure environment at Temple Beth Shalom.

TBS Happenings



What's Happening at TBS

Kavod Award Celebration on May 1

During the May 1st Shabbat Services, we hope you can help us celebrate Carmen Berkowitz and Jon Green who will be honored with the annual Kavod Awards in appreciation of their exemplary service to the congregation of Temple Beth Shalom of the West Valley. Carmen is a board vice president and Jon is board treasurer.

Mother's Day BBQ on May 3

The Brotherhood is hosting its annual Mother's Day barbecue with entertainment at 4 p.m. Sunday, May 3. Cost is \$18 per person. Please RSVP with payment by noon April 30 by calling the Temple office at 623.977.3240. There will be grilled chicken and a pasta dish for vegetarians.

Join the Lunch Bunch on May 14

Join the Lunch Bunch for conversation and fun! They will meet at 12:30 p.m. Thursday, May 14 at I & J Fountain Restaurant, 12221 W. Bell Road in Surprise. For reservations, please call or text Linda Abrams Tederman at 402-659-0286.

Shalom Club of the West Valley

The Shalom Club of the West Valley will meet at 2 p.m. Sunday, May 17, at Temple Beth Shalom. For more information, please contact Carmen Berkowitz, Shalom Club president at carmenberkowitz@msn.com or 847-721-3730.

Want to join the Shalom Club of the West Valley? Annual membership dues are \$30. Go to shalomclubwestvalley.org for more information or call Carmen.

TBS Calendar

5/1

5:30 p.m. Brotherhood Potluck

7 p.m. Shabbat Evening Service &
Kavod Awards presentation to Jon
Green and Carmen Berkowitz

5/3

4:30 p.m. Mother's Day BBQ

5/4

10 a.m. Adult Ed: "Authenticity,
Honesty and Integrity"

5/6

9 a.m. Adult Ed: "Ancient Biblical
Interpretation"

11 a.m. Torah Study

5/7

10 a.m. Adult Ed: "Jewish Influence on
Music"

5/8

10 a.m. Loss Group

7 p.m. Shabbat Service

5/9

10 a.m. Saturday Shabbat

5/11

10 a.m. Adult Ed: "Authenticity,
Honesty and Integrity"

5/13

9 a.m. Adult Ed: "Ancient Biblical
Interpretation"

11 a.m. Torah Study

1 p.m. General Board Meeting

5/14

10 a.m. Adult Ed: "Jewish Influence on
Music"

12:30 p.m. Lunch Bunch

5 /15

10 a.m. Loss Group

7 p.m. Shabbat Service

5/17

2 p.m. Shalom Club of the West
Valley.

5/18

10 a.m. Adult Ed: "Authenticity,
Honesty and Integrity"

Noon Sisterhood Luncheon

5/20

9 a.m. Adult Ed: "Ancient Biblical
Interpretation"

11 a.m. Torah Study

5/21

10 a.m. Adult Ed: "Jewish Influence on
Music"

5/22

10 a.m. Loss Group

7 p.m. Shabbat Evening Service

(Shavuot) will be followed by a study
service and dairy Oneg in the social
hall.

5/27

9 a.m. Adult Ed: "Ancient Biblical
Interpretation"

11 a.m. Torah Study

5/29

10 a.m. Loss Group

7 p.m. Shabbat Service



MOTHER'S DAY BARBECUE



4 p.m. Sunday, May 3rd

**Cost is \$18 per person
Entertainment included
and a 50/50 Raffle**

**Hosted by Temple Beth
Shalom Brotherhood**



**There will be grilled chicken
and a pasta dish for
vegetarians**



**delicious
FOOD**

Music will be provided by DJ Pedro Baez

**CELEBRATE MOTHER'S DAY
at the Brotherhood Barbecue
at the Temple**

**Please RSVP with payment by noon April 30
by calling the Temple office at
623 977-3240.**

Check Out Our Study Groups

Ancient Biblical Interpretation

This weekly study group led by Rabbi Kaplan meets weekly from 9 to 10:30 a.m. Wednesdays at Temple Beth Shalom. Cost is \$20 per person per month for Temple members and \$35 for non-members. Payment is required at the beginning of each month. You can join any time. More information is available on tbsaz.org or by calling the office at 623.977.3240.

Torah Study Group

Torah Study Zoom meetings at 11 a.m. Wednesdays. New participants are welcome. Please contact the TBS office at 623.977.3240 to get the Zoom information and to register for the discussions if you have not previously done so.



Welcome to Temple Beth Shalom of the West Valley

CHECK OUT OUR WEBSITE FOR MORE INFORMATION AT tbsaz.org

Come as you are. Discover who you are.

We are a caring and compassionate Reform Jewish congregation. We connect to people in a meaningful, generous and mature manner with as much warmth and kindness as possible. We serve the entire West Valley, including all the Sun Cities, Avondale, Buckeye, El Mirage, Glendale, Peoria, Goodyear, Litchfield Park, Surprise, Tolleson, Tonopah, Youngtown and Waddell.

AUTHENTICITY, HONESTY, AND INTEGRITY

MONDAYS • MAY 4, 11 & 18 • 10:00 – 11:30 AM

Temple Beth Shalom of the West Valley will present another three-part adult education series on Character Development with Rabbi Dana Evan Kaplan:

Strong character is built from habits that align our inner selves with our outward actions. This course explores three closely connected qualities that shape a life of character: authenticity, honesty and integrity.

Rabbi Kaplan will begin with authenticity - learning what it means to be true to who we really are. He will then turn to honesty - the courage to speak truthfully and act transparently in our relationships.

In week three, participants will consider integrity: the larger goal of bringing our values, words and actions into alignment.

Drawing on insights from psychology, Jewish ethical teaching, and everyday life, this course invites participants to reflect on how these qualities develop and why they matter so deeply for trust, leadership, and community. Together, participants will explore how authenticity and honesty become the building blocks of a life lived with integrity.

Rabbi Dana Evan Kaplan, Ph.D. is the spiritual leader of Temple Beth Shalom of the West Valley.

\$20 FOR MEMBERS | **\$35** FOR NON-MEMBERS

OR ONE COUPON



Registration Deadline: Noon, Wednesday, April 29. To register, buy coupon books & pay for the course, call the Temple Office at 623-977-3240 (Monday through Thursday) between 9AM & 3PM.

THE JEWISH INFLUENCE IN RHYTHM AND BLUES AND ROCK AND ROLL MUSIC

THURSDAYS MAY 7, 14, & 21 10:00 - 11:30 AM

Rhythm and Blues (R & B) music originated as a genre of popular music in the African American Community in the 1940's and has continued to grow in popularity with the broad music community ever since. Rock and Roll (R & R) evolved in the United States out of R & B with stylistic influences from gospel, jazz, boogie-woodie, electric blues, swing and folk music. Rock and Roll has had a profound influence on contemporary American lifestyles, fashion, attitudes and language.

This three-week course will discuss the lure of the music while providing many examples. Participants will have fun learning about the music they grew up with, while learning about the origins of the music, the song writers, the significance of the record labels and marketing strategies of the industry to attract a wide audience

Join Pedro Baez for this interesting and unique aspect of learning about R and B and Rock and Roll. Pedro was born in New York City and moved West where he became an aficionado of these two genres of music as a young man in the Los Angeles area. He became a DJ for two Los Angeles radio stations.

\$20 FOR MEMBERS

\$35 FOR NON-MEMBERS

OR ONE COUPON

PEDRO BAEZ



Registration deadline is noon on Tuesday, May 5. To register, buy coupon books and pay for the course, call the Temple Office at 623-977-3240 (Monday through Thursday) between 9:00 AM and 3:00 PM.



TBS Board Treasurer Jon Green, Dr. Perri Fine and Julianna Gonzalez

Taking charge of your hearing

Thank you to audiologist Dr. Perri Fine and her patient care coordinator, Julianna Gonzalez, for your wonderful presentation at Temple Beth Shalom on April 23 about how important it is to improve our hearing.

Better hearing will help maintain brain health, improve social interaction, and enhance quality of life.

Dr. Fine and Julianna described the services provided at her practice, Sun City Hearing Life, 13203 N 103rd Ave.:

- Complimentary hearing examinations. Dr. Fine recommends an annual hearing test, just like periodic checkup visits to other medical practitioners.
- An explanation of the test results and next steps if diagnosed with a hearing loss.
- Hearing devices through all major manufacturers and levels of hearing loss.
- Services and supplies for existing devices to maintain optimal operating performance.
- Assistance with insurance and financing.
- Other clinical expertise in ear wax removal, assisted listening devices and overall support.

Dr. Fine, who grew up in New York City, obtained an undergraduate degree in Marine Biology, then a Master's degree in Teaching and Learning. She taught middle and high school science for five years.

When COVID shut down school attendance, she pursued a career in audiology to bring the advantages of healthy hearing to her patients. She loves the Arizona sunshine so she moved here and earned her Doctor of Audiology degree at A.T. Still University in Mesa. She is a member of several Arizona and national professional associations.

Dr. Fine can be reached at her office, 602.567.9947 or suncity@hearinglife.com.

If you'd be interested in having Dr. Fine do another presentation about hearing at Temple Beth Shalom, please call the Temple office at 623.977.3240.

Temple Beth Shalom Social Action Committee



The Committee is asking you to bring a food item each month and place it in the designated space in the lobby

All of this will be benefiting the Valley View Food Bank

Item to bring this month

TOOTH PASTE, TOOTH BRUSHES & BAR SOAP

The Committee thanks you, the Food Bank thanks you, but most of all, you will be helping those that are really in need.

TEMPLE BETH SHALOM GRATEFULLY ACKNOWLEDGES THE FOLLOWING DONATIONS

You may donate to the Temple in many ways. The designated Temple Funds are listed below with a brief description of each. When making your donation, please designate your fund of choice. Online donations can be made at tbsaz.org.

General Operating Fund

In Loving Memory of:

Judy Fagen

Lael Summer & Bob Nelson

John Burris

Anne Burris

Jean Greenbaum

Anne Burris

Joe Shanis

Myrna Shanis

Nathan Michlin

Cynthia Michlin

Bernice Rabinowitz

Lori Baker

Rosina Raymond

Joyce Gold

Hersz Flatowicz

Pierre Flatowicz

Scott Gordon

Janice Sodos & Harvey Gordon

Herb Meyervitz

Janice Sodos & Harvey Gordon

Betty Rothfeld

Joan Rothfeld

Gloria Sitzman

Steve Sitzman

General Operating Fund

In Loving Memory of:

Rose Lovinger

Elane Mendelsohn

Abraham Mendelsohn

Dennis B. Adams

David Mendelsohn

Millie Lovinger

David & Sheila Lovinger

Security Fund

In Loving Memory of:

Herb Meyerovitz

Sharon Gadless

Julia Singer

Meredith Singer

Wilfred Singer

Meredith Singer

Mary Polis

Dennis Cutler

Judy Fagen

Sharon Gadless

Esther Harris

Sue Goldberg

Endowment Fund

In Loving Memory of:

Norma Roberts

Sara Jane Feldman

Jack Greenfest

Sara Jane Feldman

Ashley Ramalho

Sara Jane Feldman

Education Fund

In Loving Memory of:

Arthur Fenster

Lorraine Stein

Biblical Garden Fund

In Loving Memory of:

Esther Harris

Sue Goldberg

In Appreciation:

Karen Carnow

Steve Siegel

Congratulations:

Denny Cutler

Carmen Berkowitz

Honor the memory of a beloved family member or friend with a memorial plaque mounted in the Sanctuary. You may also celebrate a simcha with a leaf on our Tree of Life displayed in the lobby. For more information, contact Nan Rubin at 623.933.1412.

BIMAH FLOWER & FOOD BASKET FUND

Contributions are always appreciated. Make checks payable to TBS Sisterhood and send them to the office.



CONTRIBUTIONS

Many people contribute to the Flower Bouquet & Food Basket Funds “in memory of,” but did you know that you can also contribute to these funds “in honor of” to help someone special celebrate a birthday, anniversary or any other kind of Simcha?

This is Sisterhood’s major fundraiser. We use it to make donations to local food banks, but the major portion is given to our Temple whenever a need arises, such as a copier, a computer and new kitchen appliances like a refrigerator and dishwasher. We are always there to help.

Please help by contributing.

BIMAH FLOWER & FOOD BASKET FUND

Contributions are always appreciated. Make checks payable to TBS Sisterhood and send them to the Temple office.

IN MEMORY OF.....	RELATIONSHIP.....	CONTRIBUTOR.....	BIMAHFUND.....	FRIDAY NIGHT DATE
Rose Perlis	Mother	Joan & Sy Perlis	Bimah Flower	4/17/2026
Carolina Korbin	Grandmother	Sandra Sas	Bimah Flower	4/17/2026
Esther Harris	Mother	Sue Goldberg	Food Basket	4/17/2026
Isais Korbin	Grandfather	Sandra Sas	Food Basket	5/8/2026

May Birthdays	
Gloria Bold	May 1.
Vicki Goldstein	May 2.
Sally Lonn	May 4.
Nan Lieber	May 7.
Sara Jane Feldman	May 9.
Pam Katz	May 12.
Lee Siegelson	May 12.
Paul Serrine	May 13.
Arnold Alpert	May 13.
Sharon Canelise	May 17.
Richard Bass	May 20.
Barbara Rudzin	May 25.
Michelle Cohen	May 30.
Rebecca Bookman-Zandler	May 31.

May Anniversaries		
Linda & Brant Saperstein	May 4.	51st
Marlene & Jon Green	May 8.	61st
Michelle & Frederick Cohen	May 10.	26th
Sherry & Richard Steiman	May 20.	31st



JOIN US **TEMPLE BETH SHALOM** of the West Valley

We invite **EVERYONE** – Individuals, couples, and families – to be a part of our congregation. At Temple Beth Shalom of the West Valley, we celebrate Shabbat together, study Torah together, volunteer for social action projects together, and connect to Israel through food, wine, and folklore.



We are a Reform Jewish congregation serving the entire West Valley, all the Sun Cities, and Avondale, Buckeye, El Mirage, Glendale, Goodyear, Litchfield Park, Peoria, Phoenix, Surprise and Tolleson, Tonopah, Waddell and Youngtown.

Whether you are single or partnered, were born Jewish, are a Jew-by-Choice, in an interfaith family or are thinking about or interested in Judaism ... there is a place for you to join our temple family.

Worship with our rabbi and our cantor as we celebrate Shabbat with inspiring Friday night services at 7 p.m. Following services, we flock to the social hall for an Oneg. Join us for our monthly Saturday morning informal Shabbat with guitar service and a potluck brunch. Sign your children up for our religious school.

With great joy we celebrate the holidays of the Jewish calendar from Sukkot to Chanukah and Purim to Passover.

Come and visit ... and stay! We'd love to hear from you! There's a place here that only you can fill. We are conveniently located near Grand Avenue in **Sun City: 12202 N. 101st Ave.**

Go to our website, tbsaz.org, or contact the Temple office at 623.977.3240 or templebethshalomaz@gmail.com to learn more about what Temple Beth Shalom has to offer!

TREE OF LIFE



Consistent with our belief, our Tree of Life on the Lobby wall next of the office commemorates simchas and life cycle events, such as special birthdays, anniversaries or Bar & Bat Mitzvahs with an engraved leaf. We look forward to members making a contribution to the Temple and honoring their loved ones or commemorating an event by adding a leaf to the tree in their name. Each life is a \$200 donation to the synagogue. This is a lovely way to commemorate a special milestone for your family and support Temple Beth Shalom.

Please call Nan Rubin-Lieber at 623.933.1412 or the Temple office at 623.977.3240 to order you special leaf.

FORM FOR DIRECT TBS DONATIONS

Please use this form so that your donation can be properly allocated.

Make check payable to TEMPLE BETH SHALOM and mail to:
Temple Beth Shalom 12202 N 101st Ave. Sun City, AZ 85351

Online donations can be made on our website at tbsaz.org

Date: _____

Amount: \$ _____

- In Honor of _____
- In Memory of _____
- In Appreciation of _____
- Speedy Recovery _____
- Thank you _____

- Mazel Tov _____
- Happy Anniversary _____
- Happy Birthday _____
- Congratulations _____
- Thinking of you _____

Designated Fund:

- | | | |
|---|---|--------------------------------------|
| <input type="checkbox"/> Melvin Levin Operating Fund | <input type="checkbox"/> Morris & Celia Hackel Beautification | <input type="checkbox"/> Prayer Book |
| <input type="checkbox"/> Hy Mandel Biblical Garden | <input type="checkbox"/> Edith Mattal Library | <input type="checkbox"/> Endowment |
| <input type="checkbox"/> Babette Himler Education | <input type="checkbox"/> Rabbi Discretionary | <input type="checkbox"/> Torah |
| <input type="checkbox"/> Religious School Scholarship | <input type="checkbox"/> Social Action | <input type="checkbox"/> Security |

Send card to _____ Address _____

Donated by _____ Address _____



THANK YOU TO OUR FANTASTIC ADVERTISERS!

Floor Time
Dream Vacations (Ellyn Ventura)
Greenway Family Auto
Guidry Physical Therapy
Happy Valley Landscaping (Roy Spaulding)
Jerome Hammack-State Farm Insurance
Martin & Gibbs Family Dentistry
Mondlick Pero
Nails Plus LLC
Property Sisters Realtors
Rise Orthopedics
Royal Oaks
Sun Health Communities Grandview Terrace
Surprise Chiropractic

Advertise with Us

Grow your business by advertising in Temple Beth Shalom of the West Valley's monthly Shofar newsletter! Advertising rates for 12 issues from July 2026 to June 2027 are:

Full Page: \$600

Half Page: \$375

Quarter Page: \$200

For more information, please contact the Temple office at 623.977.3240 or templebethshalomaz@gmail.com.

SPACE ON THE MEMORIAL BOARD IS AVAILABLE

RESERVE SPACE NOW



Remember a departed loved one with a bronze plaque on our beautiful memorial wall located in the hallowed setting of the sanctuary. The cost is \$360. Order now for the best space selection. For information contact Nan Rubin-Lieber by phone at 623 933-1412. Or email to nrubin57@yahoo.com or call the Temple at 623 977-3240

Grandview Terrace brings new meaning to *Independent Living*

Just steps from their front door, residents have access to a plethora of dining options, a bustling social scene, and a wealth of amenities—all conveniently located under one roof.

In addition, residents receive membership to Sun City West's state-of-the-art recreational center and social amenities, including championship golf courses and dozens of charter clubs. It's another way that **Grandview Terrace** makes it easy to live a healthy and happy life.

Explore Your Options with Confidence

Assess the financial compatibility of **Grandview Terrace** with your retirement plan. Try our simple calculator for an instant, obligation-free estimate.



GRANDVIEW TERRACE

Call our sales office at (623) 975-8014 to schedule a tour!

SunHealthCommunities.org/grandview





GREENWAY FAMILY AUTO SERVICE

Service
623 977-5322



PROPANE

DOM LOPANO
VINNIE LOPANO

15030 N 99th Avenue
Sun City, Arizona 85351

Repairs & Parts
Reasonable Prices
Towing & Road

24 Hour Towing: (623) 759-2092

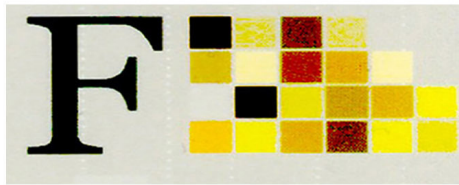


Call for an appraisal of your needs and an estimate. Landscape and water system maintenance. In business for over 20 years.

SURPRISE CHIROPRACTIC & MEDICAL ACUPUNCTURE

**14515 W. Grand Ave., Ste. C128
Surprise, AZ 85374
P: (623)-544-9111 F: (623)-544-9333**





Floor Time

Installers of our gorgeous new Temple flooring

We make changing your floor, shower or backsplash a pleasure, all with expert personalized service.

**11001 N 99th Ave. #111
Peoria, AZ 85345**

ROC# 234764

623 815-5182

FLOORTIME@HOTMAIL.COM

ROC# 345179

GIBBS & MARTIN DENTISTRY



MON: 8:00 AM - 5:00 PM

TUE: 7:00 AM - 4:00 PM

WED: 8:00 AM - 5:00 PM

THU: 7:00 AM - 4:00 PM

**14044 W CAMELBACK RD STE 200,
LITCHFIELD PARK, AZ**

(623) 535-5488



NAILS PLUS

**9190 W UNION HILLS FR. #101
PEORIA, AZ 85382**

(623) 248-5595

SERVICES OFFERED

NAIL FILL-IN

HAND NAIL FILL-IN

MANICURE

PEDICURE

TOE POLISH CHANGE

HAND AND TOE POLISH CHANGE

TOE POLISH REMOVAL

HAND AND TOE POLISH REMOVAL

WAXING

TOE NAIL FILL-IN

HAND AND TOE NAIL FILL-IN

MANICURE AND PEDICURE

NAIL POLISH CHANGE

HAND POLISH CHANGE

NAIL POLISH REMOVAL

HAND POLISH REMOVAL

NAIL REPAIR



The Right Support

WITH A LIFE PLAN COMMUNITY.



Sales & Marketing: 623-208-6621

**10015 W. Royal Oak Road
Sun City, Arizona 85351**

What if all your concerns about retirement living melted away. You'd be free to do whatever you wish, whenever you want.

Pursue new interests. Try new adventures. Travel, learn and grow. Exercise. Make new friends. Enjoy uniquely well-appointed living, dining, and recreation. Experience more independence...more support...an exceptional level of welcoming community.

What should you worry about if you absolutely had to? How about where you'll go on your next trip. Or if you'll return from the concert in time to sample the new appetizer menu with 'the group' at The Arbors.

Welcome to retirement living, the way you hoped it would be.



GUIDRY

PHYSICAL THERAPY

16572 W GREENWAY RD STE 103
SURPRISE, AZ 85388
WWW.GUIDRYPHYSICALTHERAPY.COM
623 584-3400

Specializing in Orthopedic & Sports Rehab

including: total joint replacement, neck and back pain, shoulder, knee and ankle injuries

Physical Therapy

- ° Back & Neck Pain
- ° Balance & Mobility
- ° Fall Prevention
- ° Dry Needling

Orthopedic Care

- ° Orthopedic Injuries
- ° Sports Injuries
- ° Work Related Injuries

Neurologic Rehab

- ° Stroke (CVA)
- ° Parkinson's
- ° Spine Injuries



Jerome Hammack

STATE FARM INSURANCE

15278 W Bell Road Suite 101
Surprise, AZ 85374-3100

623-440-9600

Office Hours (MST): Monday-Friday 9am-5pm
Evenings and Saturdays by appointment



12515 W Bell Rd,
Suite 103
Surprise, AZ
85378

623.234.4171

mark.jagodzinski@riseorthosportspt.com

WE'RE HERE TO HELP

At Rise Orthopedic & Sports Therapy, we offer
Evaluation and Treatment, Therapeutic and
Corrective Exercise, Manual Physical Therapy, and
Therapeutic Modalities to treat:
All non-operative orthopedic spine and extremity
conditions
Workmen's compensation injuries
Sports injuries
Post operative orthopedic conditions including:
Cervical and lumbar spine
Shoulder/elbow
Hip/knee/ankle/foot



From [propertysistersteamaz](#)

"We pledge to secure the sale of your home for the most money, or to purchase a new home in the least amount of time and without any issues. We pledge to be willing and able to discuss any aspect of the sale or purchase of your home in relation to market conditions. We offer personalized service and integrity through every step of your transaction."

(623) 229-7900



ELLYN VENTURA

Dream Vacations
1-602-595-9303
eventura@dreamvacations.com
eventura.dreamvacations.com

MINIMUM \$100/pp donation to TBS for any booking or referral booking of a Cruise or Tour 10 days or longer.



Mondlick Perio is a periodontal specialty office focusing on YOUR oral health. Specifically your gums, roots of your teeth, bone that supports your teeth, dental implants and aesthetics. We cannot wait to meet you and help you achieve your oral health goals and help you maintain it for years to come.

At Mondlick Perio, our patients receive the highest level of professional care, gaining great confidence in their smile and overall oral health.

We are delivering superior outcomes for our patients with their periodontal, dental implant, and aesthetic needs, before, during, and after treatment



Dr. Joshua Mondlick
Board Certified Periodontist
and Implant Surgeon

8671 W. Union Hills Drive #501

Peoria, AZ 85382

info@MondlickPerio.com

Tel: 623-583-3960

TEMPLE BETH SHALOM of the West Valley

12202 N. 101st Avenue
Sun City, Arizona 85351
(623) 977-3240

templebethshalomaz@gmail.com
Web: tbsaz.org

Affiliated with the Union for Reform Judaism

Shabbat Services Friday Evening 7:00 pm
Office hours: Mon.-Thurs. 9:00 a.m.- 3:00 p.m.

Rabbi Dana Evan Kaplan, Ph.D.
Baruch L. Koritan, Cantor

BOARD OF DIRECTORS

President

Sara Jane Feldman

Past President

Steve Bold

Vice Presidents

Gloria Bold 1st
Mariane Anderson
Carmen Berkowitz
Michael Zager

Recording Secretary

Dave Katz

Treasurer

Jonathan Green

Financial Secretary

Warren Bentkover

Parliamentarian

Russ Robbins

Board Members

Bernie Arum
Richard Bass
Bea Eisenberg
Steve Hechler
Lori Baker
Nan Rubin-Lieber
Marilyn Meyerowitz
Russ Robbins

Sisterhood President

Roz Goldstein

Brotherhood President

Co-Presidents

Bernie Arum
Max Allen

Synagogue Administrator

Patti Weiner

Mission Statement

**"To fulfill and
nurture the
spiritual, social
and educational
needs of our
diverse Jewish
Community."**

The deadline for item submission to the SHOFAR is the 20th of the month.