

Temple Beth Shalom of the West Valley

Sun City, AZ

SHOFAR

July 2024 155 25 Sivan-25 Tamuz 5784



INSIDE THIS ISSUE

Message from the Rabbi.....	2-3
Message from the Cantor.....	4-5
Message from the President.....	6
Bulletin Board.....	8
Torah Study Adult Classes.....	9-13
Help Wanted/Needed.....	14-15
Announcements	16-17
Social Action.....	-18
Chavurah.....	19-21
Birthdays/Anniversaries.....	25
Donations.....	26-27
Sisterhood News.....	28-29
Brotherhood News.....	30-31
Brick Fundraiser.....	34-35
Memorial	36-37
Advertisers.....	38--46



A MESSAGE FROM RABBI KAPLAN

Please check out Rabbi Kaplan's Blog
for photos, interesting notes and more at:

<https://www.danakaplan.com>

July 2024
Rabbi Dana Evan Kaplan

Every religion has its rituals and distinctive ritual items. These ritual items allow people to perform the rites of their faith. In Judaism one of the most important ritual items is the tallit, the prayer shawl. In our temple, both men and women can wear a tallit if they choose to observe this mitzvah.

In Reform Judaism, we are mandated to study each commandment and decide individually and personally how and in what way – and even if — we feel spiritually drawn to observe that specific mitzvah. Therefore, no commandment is completely obligatory. What I would like to show is that there is much to recommend this particular mitzvah, whether it is wearing the tallit when we bless the Torah or carry the Torah or even just wearing it to sit on the Bimah — or even in the pews.

The word tallit comes from the Hebrew word *tallith*, which means "cloak" or "cover". Normally when we refer to a tallit we're talking about the cloth part which forms the vast majority of the item.

This cloth part of the tallit is called a *beged*. It is usually made from cotton or wool. The *beged* has to be rectangular. Apparently, at the time that this Mitzvah was developed it was customary for people to wear rectangular garments. If you look at our clothing today, you will see that almost nothing that we might wear is actually rectangular.

It turns out that the most important element of the tallit is not the garment itself but rather the strings attached to it. The Torah instructs the Children of Israel to attach fringes called *tzitzit* to the corners of their rectangular garments. The mitzvah is to put these strings on the four corners of one's garment to remember God all the time and our relationship to God as Jews. So in order to wear *Tzitzit*, we need to first put on a rectangular garment!

The origin of the *tzitzit* is biblical. Many commandments are rabbinic which are still regarded as important, but a commandment which is directly traceable back to the Bible is considered even more important. So we want to observe the mitzvah first and foremost because it is a commandment set forth in the Torah itself and also because we today find meaning in it. It may help us to put ourselves in the mind space to focus on prayer. It may also serve as a way of showing respect to the Torah which is why most people first put on a tallit before they carry a Torah. The tallit has four corners with knotted and twined fringes called *tzitzit*. In each of the four corners of the shawl are strings tied in a particular pattern. You must have a rectangular garment on in order to wear *Tzitzit*. Since most people no longer wear literally four-cornered garments, the tallit is worn specifically to fulfill the biblical precept.

Tzitzit fulfill the following commandment in the Torah portion *Shlah* which is in The Book of Numbers:

“Speak to the Israelite people and instruct them to make for themselves fringes on the corners of their garments throughout the ages; let them attach a cord of blue to the fringe at each corner. That shall be your fringe; look at it and recall all the commandments of God and observe them, so that you do not follow your heart and eyes in your wayward urge. Thus you shall be reminded to observe all My commandments and to be holy to your God. “(Numbers 15:37-41).

Continued Message From Rabbi Kaplan

If you read this paragraph carefully you will notice something very interesting. It includes the requirement to attach a cord of blue to each set of fringes. This practice was discontinued in the later rabbinic period Around the close of the Babylonian Talmud. The problem was that the identity of which species of mollusk that produces this blue color called tekhelet was apparently lost. In the 1880's, a rabbi claimed that the dye came from the Cuttlefish (which I have seen scuba diving!) and the practice could be resumed. But we in the Reform movement have not acted on this rediscovery!

Later, in the Book of Deuteronomy, it is written that:

“You shall make tassels for yourselves on the four corners of your clothing with which you cover yourself.” (Deuteronomy 22:12).

This doesn't seem to add or change anything from the earlier text in the Book of Numbers. Nevertheless, it reinforces the sense that the Jewish religious leaders at the time of the Babylonian exile remain committed to the idea of wearing a tallit, not only during prayers, but during daily activities. Today Orthodox Jews continue this practice by wearing a tallit katan, a small tallit under their outer shirt.

What is the religious meaning of the tzitzit and specifically the 8 strands and 5 knots? There are many interpretations of course. Rashi suggests that the 8 strands of the tzitzit correspond to the 8 days between the Israelites offering up the paschal sacrifice and the day they crossed the Sea of Reeds. The 5 knots correspond to the Five Books of Moses. Both remind us to fulfill the commandments of the Torah.

Together, then, the tzitzit serve to remind us that, just as God redeemed our ancestors from Egypt and at the Sea of Reeds, so too will God continue to protect and redeem the Jewish people in every generation.

As we put on the tallit, we say the following blessing:

ברוך אתה ה' אלהינו מלך העולם אשר קדשנו במצותיו וצונו להתעטף בציצית

Baruch atah adonai
Eloheinu melech ha olam
Asher kidishanu b'mitzvotav
Vitzivanu l'hitatef b'tzitzit.



Blessed are you Adonai our God, Ruler of the Universe, who has sanctified us with your mitzvot and commanded us to wrap ourselves in tzitzit. Amen



NOTES FROM OUR CANTOR

Memory can be applied to so many wonderful aspects of our life. One can yearn, then learn to know the Torah as one knows a song, a remembered melody that takes center stage in one's consciousness and suddenly is being hummed or sung by, of all people, you! This aspect of knowing precedes any motivation, which may lead to action. Firstly, it forces into existence a spiritual intimacy, one which becomes the center of what it means to be a Jew.

The Torah reveals to Moses that which will bring the Jewish people back to God is a song ---the Song of the Torah. "For the commandment which I enjoin upon you this day, "says Moses, "is not beyond reach. It is very close to you, in your mouth and in your heart." (Deut. 30:11-14) This kind of intimate knowledge of the Song of the Torah is what "returns" us to ourselves, to God, i.e. "when the many evils and troubles befall them, then this song shall confront them as a witness, since it will never be lost from the mouth of their offspring." (Deut.31:19-21) Sudden momentary revelations that lead us back to God only come to those who continue to search. What they find is, indeed, very close to them in their hearts and minds and is part of their souls.

In the Song, the Torah describes Israel's falling away and falling apart, when the many evils and troubles happen to them, i.e. (because) "they provoked Me with a non-god, angered me with their vanities" (see First Commandment for that one's prior warning ---it was more than a suggestion!)

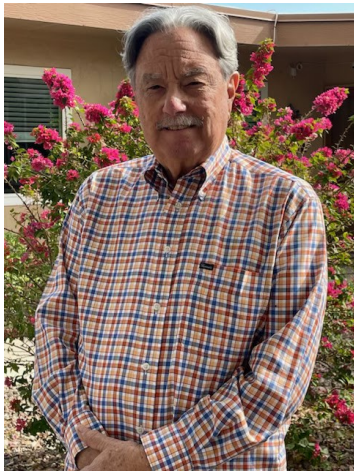
The great Hassidic teacher and songwriter, Rabbi Schlomo Carlebach (b. 1925, Berlin - d.1994, New York), explained it this way: "The closer you are to a person, the more you believe he cares about everything you do. If you bump into someone whom you are not close to, whom you haven't seen for six months, and he asks you, 'What's new?' you might not tell. A really close friend even wants to hear what you ate for breakfast. A strange god is one who you don't believe cares about who you are and what you do ---he's a stranger to you. The more you believe God cares about your every movement, the less you are worshipping a strange god." Carlebach's life's work became bringing Jews of all denominations back into the fold. Considering he didn't learn English until age 26, his use of our language is masterful, driving right to the heart of his songs' core. Most of his material is in Hebrew and Yiddish. His song in English, "Return Again," a melodic and lyric masterpiece of simple strength and truth, is a mainstay of our *shuva* liturgies, our prayers for returning to who we truly are.

NOTES FROM OUR CANTOR continued

One of the first classes the Rabbi set up was in 1950, entitled, TSGG, an acronym for "Taste and See God is Good." The Lubavitcher Rebbe, Menachem Mendel Schneerson, urged him to use his special skills and perform on college campuses to reconnect Jews to their roots, but later he disapproved of the non-traditional tactics Carlebach used. Undaunted, he composed thousands of songs even though he never learned to read musical notation. His *Esa Enai* is another song we include in our High Holy Days services. He was often called, "The Soul Doctor," and that was also the name of a Broadway musical about his life, presented on and off Broadway less than a decade after his early death at 69 from a heart attack. He is considered a pioneer of the Baal Teshuva Movement ("returnees to Judaism").

Another song in which I find renewal is his *Lule Toratcha*. The lyrics translated are: "Live God's Torah for all of your days. Then you will be blessed, blessed with life. I would have perished from my affliction unless Your law had been my delight". (Deut. 30:1-20) Carlebach's songs evoke a special kind of intimacy with God, a constant feeling of falling away and being re-embraced. Ebb and Flow, the rhythm of life, calling to us once again. Will we answer?

Baruch Koritan



MESSAGE FROM YOUR PRESIDENT

Stephen Bold

President Miscellany:

Rental of Temple areas. Two areas of the Temple are rented and occupied by new tenants. In the hall next to the sanctuary the room is being used by Elyse Finocchio, a licensed counselor. The auditorium, boardroom and classroom have been leased by the Living Word Church. They are painting and carpeting the rooms and helping with the landscaping out back. While this is great, please remember that this revenue still does not completely close the deficit that the Temple has endured for many years. So we will still be working hard on fundraising.

The **Final Budget** was approved by the Board of Directors on June 6, 2024, and after receiving your returned ballots, has been approved by the membership.

Genizah: a repository for timeworn sacred manuscripts and ritual objects.

In August the Temple will be having a service at the Genizah at Sunland Memorial where the Temple will bury religious items that are damaged or out of use. If you have any items at home that you feel should be buried, please drop them off at the Temple.

The Wall of Honor and Chapel Ark. You will notice two changes in the Temple. The pictures of the Rabbi, Cantor and President's pictures have been moved to a place of honor in the hall north of the lobby. Please stop by and have a look at the Temple's pioneers and leaders. In addition, an Ark has been permanently mounted in the Chapel. Please thank Bernie Arum who did most of the work in making these changes happen.

Shalom

Steve

AN IMPORTANT MESSAGE FROM THE TEMPLE

Wearing a Tallit for Honors at Temple Beth Shalom of the West Valley

Members of Temple Beth Shalom – or any other Reform Jewish congregation – are not required to wear a tallit or kippah at any time during religious services, although many of our members do so – especially during the High Holy days. Neither the Union for Reform Judaism (URJ) nor the Central Conference of American Rabbis (CCAR) require persons who hold or carry a Torah, or who recite the blessing before or after the reading of the Torah or the Haftorah, to wear a tallit.

When Carrying or Holding a Torah or Reciting a Blessing

It is the practice at TBS to wear a tallit when carrying or holding a Torah. Similarly, many at TBS choose to observe this practice when reciting the blessing before or after the reading of the Torah or the Haftorah. Rabbi Kaplan thinks it is a practice we should observe. However, it is not a mandate to do so.

When Sitting on the Bimah

Members of TBS who accept the honor of sitting on the Bimah (with or without responsibilities) during a service are not expected to wear a tallit. However, Rabbi Kaplan thinks it would be nice for Bimah participants to wear one and for our Temple community to see members on the Bimah wearing a tallit. We hope that members who accept Bimah honors will give serious consideration to doing so.

TBS provides a tallit rack with tallitot in the lobby just before the entry doors to the sanctuary. These tallitot are available to anyone to borrow for wearing during a service. We just ask that if you borrow one, you fold it and return it to the rack after the service. There is usually a “spare” tallit or two folded up and sitting on the top of a bookshelf along the wall leading to the sanctuary. Any of these can also be borrowed for wearing during a service.

Please let the Rabbi know if you would like to discuss anything related to this matter of wearing a tallit at TBS.

BULLETIN BOARD

July 2024

7/1

10:00 AM Beginning Hebrew

7/21

10:00 AM General Board Meeting

7/4

Happy 4th of July

The temple office is closed.



7/22

10:00 AM Beginning Hebrew

7/5

7:00 PM Shabbat Evening Service

7/25

10:30 AM Endowment Meeting

1:00 PM Security Meeting

7/8

10:00 AM Beginning Hebrew

7/26

7:00 PM Shabbat Evening Service

7/9

10:00 AM Outreach Meeting

7/29

10:00 AM Beginning Hebrew

7/11

1:30 PM Team TBS Meeting

7/12

5:30 PM Choir Rehearsal

7:00 PM Shabbat Evening Service

7/15

10:00 AM Beginning Hebrew

7/18

11:30 AM Religious Practices Meeting

7/19

7:00 PM Shabbat Evening Service

Torah Discussions

Torah Discussion Group – Every Wednesday at 11:00 AM via Zoom

**There will be no Torah Discussion Group for the month of July.
Torah Study will be taking a hiatus and will resume in August.**



Temple Beth Shalom of the West Valley



Back to School

the TBS Religious School
Open House!
Sunday, August 11th, 2024
3-5pm

JOIN US

**Kindergarten through Confirmation.
Kindergarten is free of charge!**



**12202 N 101st Ave
Sun City, AZ 85351**

**(623) 977-3240
www.tbsaz.org**

templebethshalomAZ@gmail.com

א
ב ג
ד ה ו
ז ח ט י
ק ר ש ש ת
נ ס ע פ פ צ

א ב ב ג ד ד ה ו
ג ד ד ה ו ז ח ט י

IF YOU CAN'T READ THIS,
**YOU NEED
CLASSES!**

ALEF – BET: BEGINNING HEBREW FOR ADULTS

OPEN TO ALL ADULTS - JEWISH AND NON-JEWISH -
WHO WOULD LIKE TO LEARN BASIC HEBREW

TUESDAYS • SEPTEMBER 3, 10, 17, 24
10:00 - 11:00 AM

Here is your chance to learn how to read the letters and the vowels in Hebrew. Beginning from scratch, we will go through each of the Hebrew letters as well as each vowel and explain how you put together sounds and eventually words.

This will be a basic simple course for those who would like to read prayer book Hebrew. It will require some practice at home and some perseverance after the course ends but it is definitely possible to learn to read the Hebrew letters from the prayer book. Even if you are not entirely successful, the familiarity with Hebrew that you will acquire will make you feel more connected to the Friday night prayer service and Judaism as a whole.

This 4-week course will be taught by TBS member Mariane Anderson, who is also the Coordinator of our Religious School. In addition to teaching in religious schools for over 15 years, she was motivated to learn siddur Hebrew herself so she could teach beginning Hebrew to her daughter and the other fourth graders so they would be prepared to become B'nai Mitzvah.



MARIANE SAYS

"Teaching adults is no more difficult than teaching a room full of fourth graders who would rather be playing video games."

\$25 FOR MEMBERS | **\$35** FOR NON-MEMBERS

OR 1 COUPON • INCLUDES COURSE MATERIALS

ADVANCE REGISTRATION AND PAYMENT OF FEES REQUIRED BY THURSDAY NOON, AUGUST 25.
Register by contacting the Temple office between 9:00 AM and 3:30 PM, Monday through Thursday.



TEMPLE BETH SHALOM
OF THE WEST VALLEY

12202 N. 101st Ave. • Sun City, AZ 85351
623.977.3240 • tbsaz.org

WHY DID THE BIBLE BEGIN?

THURSDAYS • SEPTEMBER 5, 12, 19, & 26 • 10 - 11 AM

Have you ever asked yourself this question? Probably not!

Many books on the Bible answer the 4 W's of historical scholarship — who, what, when, and where? Jacob Wright, of Emory University suggests that a fifth "W" question is the most intriguing, which is why?

This September, anyone interested in this topic will have the opportunity to explore this fourth question. In this four-part series we're going to look at why the Bible was written by going beyond the Bible's religious teachings to its political and social dimensions by using the writings of Jacob Wright.

Most of the important activity related to the creation of the Bible occurred in and around the time of the Babylonian exile. The Babylonians conquered Jerusalem in the summer of 586 BCE. It was expected that this would be the end of the Judeans. But that did not happen.

Instead a small group of Judeans eventually returned from Babylonian exile to their homeland in Judea. They rebuilt the temple with the permission of the Persians and tried as best as they could to reconstitute national life. At the same time groups of scribes created, edited and redacted what became the Hebrew Bible.

The scribes who worked on biblical texts during this time are much less known than the later rabbis but they may be as or more important. We will try to look at what the experience under the Babylonians was like and what they thought about the important issues of the day.

The question that we will ask is why did they do that? What were they trying to demonstrate? Did they have one central belief that was of paramount importance to them or did they have many agendas some of which may have been conflictual?

You will never be able to see the Bible again in the same way!



Dana Evan Kaplan, Rabbi of Temple Beth Shalom of the West Valley (TBSWV), will lead this course.

\$20 FOR MEMBERS | **\$35** FOR NON-MEMBERS

or 1 COUPON FROM BOOK

TBSWV now has coupon books for its Adult Education courses that can be used for any 4 courses beginning September 2024 through June 2025.

The cost for a book of 4 coupons for TBS members is \$65 (a 19% discount) and a book of 4 coupons for non-members is \$120 (a 17% discount). Coupon books are available at the TBS Office.

Persons who are interested in enrolling in this course should call the Temple Office at 623-977-3240 between 9 am & 3 pm, Mon. - Thurs. by September 3rd to register and pay the course fee.



12202 N. 101st Ave. • Sun City, AZ 85351
623.977.3240 • tbsaz.org



HIGH HOLY DAY PRAYERS

MONDAYS • SEPTEMBER 9, 16, 23, & 30 • 10:00 - 11:00 AM

Temple Beth Shalom of the West Valley (TBSWV) presents this four-part series course that will look at some of the more important prayers of the High Holy Days. This year we will begin using a new prayer book for RoshHaShanah and Yom Kippur, called the Mishkhan Hanefesh, or the "Machzor for the Days of Awe." Although our use of this prayer book will be new for us at TBS, it was adopted by the Union for Reform Judaism several years ago and is used by Reform congregation throughout the United States.

During these four weeks, we will examine some of the more important prayers of the High Holy Days as well as look at how this prayer book differs from its predecessors. We will focus on specific liturgical compositions that are of great significance to these "days of awe." In addition to studying them carefully in English, we will listen to the music of several of them so that we will be able to identify them when they are sung during our services. This is a "hands-on" workshop for anyone who wants to learn about our High Holy Day prayers in theory and in practice.



Dana Evan Kaplan, Rabbi of Temple Beth Shalom of the West Valley (TBSWV), will lead this course.

\$20 FOR MEMBERS | **\$35** FOR NON-MEMBERS

or 1 COUPON FROM BOOK

TBSWV now has coupon books for its Adult Education courses that can be used for any 4 courses beginning September 2024 through June 2025.

The cost for a book of 4 coupons for TBS members is \$65 (a 19% discount) and a book of 4 coupons for non-members is \$120 (a 17% discount). Coupon books are available at the TBS Office.

Persons who are interested in enrolling in this course should call the Temple Office at 623-977-3240 between 9 am & 3 pm, Mon. - Thurs. by September 4th to register and pay the course fee.



**12202 N. 101st Ave. • Sun City, AZ 85351
623.977.3240 • tbsaz.org**



Thank you! Thank you! Thank you !

We want to give a big thank you to our board member, Bea Eisenberg for all her help in getting our renters here at TBS. We now have 2 renters using space!

Another special thank you goes to board member, Bernie Arum! Bernie has spent hours rehanging pictures of past rabbis, Board Presidents, and our present Rabbi and Cantor in our new Wall of Honor. Be sure and go look at it, to the left of the entrance of the Social Hall.



HELP WANTED

We need four or five people with good phone presence to help make calls to former students' families to ask if they know of anyone, or would be interested themselves, in having children or grandchildren in the new TBS Religious School. The calls would be partially scripted so the volunteers would know what to say and the effort would last about a couple of weeks depending on how many volunteers there are.

If you would like to be one of these very special people, please contact Mariane Anderson at marianelie18@yahoo.com or 623-337-4207.

Help Wanted

The TBS Outreach and the TBS Membership Committees are combining their resources to accomplish a new objective, “In-Reach”. We’ll need additional people to accomplish this objective, so we’re inviting applicants to help us.

Our overall goals are to engage more members in TBS life. For those who have recently joined, we want to introduce them to mentors within the congregation to welcome them and make introductions to the committees in which they’ve expressed potential interest.

For those “quiet” members that are not yet active, and who wish to become more so, we’ll do the same.

If you are interested in helping out, please email Jon Green at JMGreenCPA@gmail.com to set up a call or meeting for more information, and an invitation to a planning meeting.

We are an equal opportunity employer, with great benefits to offer.

Social Opportunity

The mighty TBS Outreach Committee will sponsor a recruiting event for membership in a new club, Arts & Culture. Members of this club will investigate area performance and art show type opportunities , arrange group tours or tickets, pre-event dinners, and after-event discussions. Members of the current TBS Book Club are welcome with no additional cost.

If you are interested in helping us organize and are eager to participate, please contact Jon Green at JMGreenCPA@gmail.com.

SATURDAY SHABBAT SERVICE & POTLUCK BRUNCH

**Our Saturday Shabbat Service and Potluck Brunch
are taking a hiatus for the summer.**

The Saturday morning service will resume in September.



Ellyn Ventura is our New Caring Committee Chair.

If you are ill or know someone who is ill and needs our prayers,
please contact Ellyn at 602-595-9303 or 1bronxgal@gmail.com.

Yom Kippur Memorial Book

Sandy Shedroff will be putting together the Yom Kippur Memorial Book this year. Please fill out the form below and drop it off or mail it to the Temple office. If you have any questions, please contact Sandy at 623.670.3725.



YOM KIPPUR MEMORIAL BOOK

Temple Beth Shalom of the West Valley

5785-2024

YOM KIPPUR OCTOBER 12, 2024

In keeping with Jewish tradition, on Yom Kippur, our most Holy Day, Jews everywhere recall their loved ones who have passed on by reciting the Yizkor Memorial Service. This year, our **Yizkor Memorial Book** will be published for use during the Yom Kippur Memorial Services.

Members of the Congregation for many years have placed their loved ones' names in our pages of Remembrance as a way of performing the requirement on this holiday giving Tzedakah or by making a gift in their loved ones' name to the Temple.

If you wish to avail yourself of this opportunity this year, please print your name, address, and phone number along with the names to be listed "in memory of" in the proper area below. All names must be printed clearly.

You may memorialize your loved ones with either a line listing, a beautifully laid out $\frac{1}{4}$ page, $\frac{1}{2}$ page or full page. Check one from below for each insertion.

_____ Full Page	\$234.00
_____ $\frac{1}{2}$ Page	\$162.00
_____ $\frac{1}{4}$ Page	\$108.00
_____ Line Listing	\$ 36.00 for 3 names
_____	\$ 18.00 for each additional line

NOTE: Last Year's listing is available in the Temple office if you wish to use it as a guide.

Print Deadline Wednesday, September 18, 2024

PLEASE PRINT OR TYPE INFORMATION TO ASSURE ACCURACY

Return to Temple Office with check.

CONTRIBUTOR(S) NAME: _____

TELEPHONE AND EMAIL ADDRESS: _____

PUBLISH THE FOLLOWING NAMES: (If more lines needed, print on back side)

_____	_____
_____	_____
_____	_____

Temple Beth Shalom
Attention: Memorial Book
12202 N. 101st Ave.
Sun City, AZ 85351
(623) 977-3240

Temple Beth Shalom Social Action Committee



JULY

The Committee is asking you to bring an item each month and place it in the designated space in the lobby

All of this will be benefiting the Valley View Food Bank

Item to bring this month



SCHOOL SUPPLIES

The Committee thanks you, the Food Bank thanks you, but most of all, you will be helping those that are really in need.

Religious School students gave presents to volunteer teachers to thank them for a great school



Temple members and religious school students together for shabbat services



Temple members together for shabbat services.



Temple members together for shabbat services continued





Conservation—Awareness—Resources—Energy

Temple Beth Shalom of the West Valley is partnering with We Care Recycling

We Need Your Support

Temple Beth Shalom of the West Valley is hosting a clothing and shoe recycling bin to help keep textiles out of the landfills!

How it Works:

- 1) Clean out your closets and dressers.
- 2) Place all outgrown clothing and shoes into a bag.
- 3) Bring said bag to Temple Beth Shalom and place it in the **blue bin in the parking lot.**



It is estimated every human throws over 80 pounds of textiles into the landfill every year! Once in the landfills, natural fibers can take hundreds of years to decompose. Textile recycling has significant challenges—without community awareness and education our future generations will struggle more than ever!

Our clothes recycling programs reduce emissions and provide affordable clothes to people locally and abroad. The mission of our organization is to partner with local businesses, schools, places of worship, and property owners to help keep clothes and shoes out of the landfill and into homes that are in need.

TREE OF LIFE



Consistent with our belief, our Tree of Life on the Lobby wall next to the office commemorates simchas and life cycle events, such as special birthdays, anniversaries, or Bar & Bat Mitzvahs with an engraved leaf. We look forward to members making a contribution to the Temple and honoring their loved ones or commemorating an event by adding a leaf to the tree in their name.

Each leaf is a **\$200.00 donation to the synagogue**. This is a lovely way to commemorate a special milestone for your family and support Temple Beth Shalom.

Please call Nan Rubin-Lieber at 623-933-1412, or the Temple office at 623-977-3240, to order your

GRIEF RECOVERY GROUP

Our Grief Group weekly meetings will be taking a hiatus for the summer.

Our support sessions will resume in the fall.

Joyce Gold Ph D

MaryGill Savoren DSN



Do you know what a Chavurah is?...

A Chavurah is small groups within a large group. The large group being Temple Beth Shalom. In many instances the Chavurahs become extended families. They can be Social groups, Study groups, any type of group that you want. Chavurah is open to Temple Members only and the Spouse or Partner of the Member (whether they are members or not).

I have three questions for you:

1. Your name and phone number_____
2. What is your interests_____
3. Are you interested in a Couples group, Single group or Mixed group._____.

If you are interested or want more information, or want to be on the Committee, contact me. I am Sandy Shedroff 623-376-8737 or my cell phone 623-670-3725. My email is: Shshedroff@aol.com

The great thing about being in a Chavurah is, when you come to Temple or a function, you are not alone or sitting by yourself.

JULY BIRTHDAYS

David M. Katz 7/2
 Danielle Reed Tobey 7/3
 Meredith Weisman Amaral 7/6
 David Rudzin 7/14
 Harvey Gordon 7/20
 Joanne Gorelick 7/28
 Eileen Fein 7/29
 Beatrice Eisenberg 7/30
 Bernard Feinberg 7/30
 Sandra Sas 7/30



JULY ANNIVERSARIES

Elizabeth & Barry Keyles	7/10	20th
Suzan & Dov Giloni	7/17	35th
Sandra Sas & Armando Espinoza	7/23	16th
Gloria & Stephen Bold	7/28	51st
Sheril & Leonard Mandel	7/28	6th
Marie & Jac Ramsey	7/28	33rd
Jean & Randy Rosen	7/30	29th

TEMPLE BETH SHALOM GRATEFULLY ACKNOWLEDGES THE FOLLOWING DONATIONS

You may donate to the Temple in many ways. The designated Temple Funds are listed below with a brief description of each. When making your donation, please designate your fund of choice.

General Operating Fund

In Loving Memory of:

Lillian Gushansky

Lou Gadless

Brenda Coran

Lori Baker

Mortimer May

Nancy Urbach

Kenneth Waxman

Louis Handelman

Gloria Waxman

Faye Katz

Pam & Dave Katz

Bernard Henning

Delano Bryant

Fay Henning-Bryant

Victoria Toeg Isaac

Nathan Michael

Zion Reubini

Therese Michael

Lloyd Cooper

Marlene Green

Happy Birthday:

Howard Lonn

Warren Bentkover

Thank you

In Appreciation of:

Temple Beth Shalom

Joan Rothfeld

Rabbi's Discretionary Fund

In Loving Memory of:

Doris Balter

Barbara Rudzin

Harry A. Stein

Alan M. Stone

Benita Stein

Endowment Fund

In Loving Memory of:

Ester Sokofsky

Ellen Winderlich

Education Fund

In Loving Memory of:

Evelyn Roberts

Riva Meyerovitz

Anna Rudzin

David Rudzin

Social Action

In Loving Memory of:

Joan Bernstein

Sharon & Lou Gadless

Millie Lovinger

David & Sheila Lovinger

Biblical Gardens Fund

In Loving Memory of:

Irving Abramowitz

Marc & Lauren Abramowitz

Honor the memory of a beloved family member or friend with a **memorial plaque** mounted in the Sanctuary. You may also celebrate a simcha with a leaf on our Tree of Life displayed in the lobby.

BIMAH FLOWER & FOOD BASKET FUND

Contributions are always appreciated. Make checks payable to
TBS Sisterhood and send them to the office.



IN MEMORY OF.....RELATIONSHIP.....CONTRIBUTOR.....BIMAH FUND.....FRIDAY NIGHT DATE

Lillian Gushansky	Grandmother	Lou Gadless	Food Basket	05/10/24
Aaron Fogel	Father	Sharyn Helbon	Food Basket	05/31/24
Ilsa Blumenthal	Mother	Miriam Lent	Food Basket	06/14/24
Millie Lovinger	Grandmother	The Lovingers	Flower Basket	06/21/24
Earl Schatz	Husband	Yolanda Schatz	Food Basket	06/28/24

Many People contribute to the Flower Bouquet & Food Basket Funds “in memory of”, but did you know that you can also contribute to these funds “in honor of” to help someone special celebrate a birthday, anniversary or any other kind of Simcha?

This is Sisterhood’s major fundraiser. We use it to make donations to local food banks, but the major portion is given to our temple whenever a need arises, such as a copier, a computer and new kitchen appliances like a refrigerator and dishwasher. We are always there to help.

Please help by contributing.



INFORMATION FROM YOUR TBS SISTERHOOD PRESIDENT ROZ GOLDSTEIN

On the third Monday of the month, Sisterhood has a luncheon program. Our luncheons are delicious and the programs are always interesting and fun. In October we had a presentation on Breast Cancer Awareness conducted by Mary Gill Savoren, a long time Sisterhood member. In the following months there will be a Chanukah meeting with entertainment and our yearly women's Seder. Further discussion and details to be announced at a later date.

Every month we also help the synagogue pay for our weekly security guard.

Your TBS Sisterhood supports the area Food Bank. Any donations that we receive for Food Baskets or Flower Baskets in memory of someone, or celebration of birthdays, anniversaries, graduations, new babies, etc., are sent to the designated fund the donor chose and to the Valley View Food Bank.

At the end of our fiscal year, we donate a good portion of our funds to the temple operating fund maintaining the synagogue or for new equipment or repairs, especially in the kitchen.

Please join us. If you are a new TBS member, the dues are free for your first year and \$30.00 in the years that follow, I'm happy to answer any questions or listen to any suggestions you may have about our group. Please don't ever hesitate to contact me.

Roz

[Bereavement "Meal of Consolation"](#) Families of a member can call Yolanda Schatz at (623) 566-6686 to make arrangements for a meal at the Temple.

Brotherhood

of Temple Beth Shalom

We would like you to be involved in all of our Brotherhood events by joining. First year temple members are free.

Planned dinners, outings, brunches, helping the temple, and working with Sisterhood are only part of what we do. But most of all, we can all enjoy a great camaraderie. We are all from different parts of the country with different and wonderful ideas and it is our communal efforts that make TBS great.

This year we have brand new officers and they are energetically planning for an eventful year.

Contact me (Glen Zelkind) at (303) 514-2895
or call the temple at (623) 977-3240 for an application.

Looking forward to working with you.
Glen Zelkind
Brotherhood President



Brotherhood

Become part of the backbone of Temple Beth Shalom.
Join a group that knows how to help.
Join the Brotherhood today.



First year members of TBS are given a free membership in the Brotherhood. Just submit this form and let us know you are a first year member of TBS.

Returning members need to submit this form and a \$25 payment for the year.

You can bring it in to the office or mail it to:

Temple Beth Shalom 12202 N 101st Ave. Sun City, AZ 85351.

Make sure you write "Attention: TBS Brotherhood" on the envelope, and that your checks are made out to: Temple Beth Shalom Brotherhood.



Please enroll me as a member of Temple Beth Shalom Brotherhood for the year:

2024-2025

I have some expertise in the field of _____, and/or
_____ am willing to help in other ways for the benefit of the Brotherhood and temple.

Suggested areas that we can always use help: (✓ if you feel you can help)

Guest Speakers ____; Welcome back Cookout ____; Dinners planning ____;
Spring training Game ____; Once a month Usher ____; Key Committee ____;
Helping set up and take-down for events ____;

NAME: _____

EMAIL: _____

HOME PHONE: _____

CELL PHONE: _____



TEMPLE BETH SHALOM OF THE WEST VALLEY

SANCTUARY CHAIR SPONSOR PLAQUES FINALLY ON SALE AGAIN



Chair plaques are available for purchase for \$200 each.
We only have 30 sanctuary chairs left that don't have
sponsor plaques on the back of them.

Plaques are 3" x 3/4 " and there is room for two lines.

Note: Sponsorship does not include private rights to the use of the
chair, it will always be open to all.

Members may call the Temple at 623 977-3240
to place their order, or call Nan Rubin Lieber at 623 933-1412
or return this form along with payment to TBS
12202 N 101st Ave. Sun City, AZ 85351



Donated by
Bill and Esther Sather

example

Doner (you)

your plaque

Phone

More than one plaque? Just duplicate the above form.

NAME BADGE INFORMATION

It was recommended by the Membership Committee and voted on by the Board of Directors that the board members, trustees and committee chairs, as well as TBS staff wear a personalized name badge to all temple functions. Any member of the temple who wishes to purchase a name badge may do so at the cost of **\$10**.

The name badge will be made of hard plastic with the TBS logo and magnetic backing to affix to clothing. There will be room for your name and underneath it your title, if you have one. You will have a choice of the type of clasp you wish to order; a pin clasp or magnetic clasp.

ANYONE WITH A PACEMAKER OR ANY OTHER MEDICAL IMPLANT DEVICE SHOULD ORDER A PIN CLASP FOR YOUR NAME BADGE. DO NOT GET A MAGNETIC NAME BADGE AS IT CAN INTERFERE WITH THE OPERATION OF A PACEMAKER AND OTHER MEDICAL DEVICES. YOU SHOULD ORDER A PIN CLASP NAME BADGE.

On the form below, please print your name as you would like it to appear on your name badge and the type of clasp you would like.

NAME: _____

TYPE OF CLASP: MAGNETIC BACKING: _____

PIN CLASP: _____

COST: **\$10** EACH DUE: ASAP

**PLEASE SEND PAYMENT TO THE TEMPLE BETH SHALOM OFFICE.
IF YOU HAVE ANY QUESTIONS, PLEASE CALL CARMEN 623-444-6156**



LEAVE AN
EVERLASTING DEDICATION
BY PURCHASING A BRICK WITH YOUR
PERSONAL INSCRIPTION ENGRAVED AND
PLACED OUTSIDE SURROUNDING THE
TEMPLE BETH SHALOM MENORAH.



In a separate adjacent section, you can now purchase a memorial brick for your pet. This may not be mixed in with other bricks for individuals. It is purely for remembering a lost pet that you were close to. You can have 22 characters (including spaces) per line,
Cost per brick is \$100

Call Helene at the temple at 623 977-3240 or email TBS at templebethshalomaz@gmail.com.

P.S. Bricks are still available for people too

TEMPLE BETH SHALOM

12202 N 101st Ave Sun City, AZ 85351

BRICK PATHWAY PURCHASE A BRICK FORM



Thank you for your participation in this important project. If you have questions, please feel free to contact the Temple Office at 623-977-3240 or templebethshalomaz@gmail.com.

I/We are purchasing _____ (number of bricks). The cost of each standard sized brick is \$100. **You can also add a logo / graphic for an additional \$36 or order an 8"x 8" brick with 6 lines for an additional \$100 each. Contact the Temple Office for more information.**

Total amount enclosed \$ _____

To expedite your order, enter your information at www.bricksrus.com/donorsite/tbsbricks

If you prefer, please fill out the form below and return it to the office.

Inscription #1 Maximum of 21 characters per line including spaces. All wording will be centered.

Please print.

Inscription #2

Dated: _____

SIGNATURE: _____

EMAIL ADDRESS: _____ PRINT NAME: _____

SPACE ON THE MEMORIAL BOARD IS AVAILABLE

RESERVE SPACE NOW



Remember a departed loved one with a bronze plaque on our beautiful memorial wall located in the hallowed setting of the sanctuary.

Order now for best space selection.

For information contact:

Nan Rubin-Lieber by phone: 623-933-1412;

email: nrubin57@yahoo.com; or
the Temple office @ 623-977-3240.

Donations for Temple Funds

Please use this form so that your donation can be properly allocated.

Make check payable to **Temple Beth Shalom** and mail to:
Temple Beth Shalom, 12202 N. 101st Ave., Sun City, AZ 85351

Date: _____ Amount: \$ _____
In Honor of _____ In Memory of _____
In Appreciation of _____ Speedy Recovery _____
Thank you _____ Happy Birthday _____
Happy Anniversary _____ Congratulations _____
Mazel Tov _____ Thinking of you _____

Designated to:

<input type="checkbox"/> General Fund	<input type="checkbox"/> Mattal Library	<input type="checkbox"/> Endowment	<input type="checkbox"/> Prayer Books
<input type="checkbox"/> Education	<input type="checkbox"/> Biblical Garden	<input type="checkbox"/> Choir	<input type="checkbox"/> Security
<input type="checkbox"/> Rabbi's Discretionary Fund	<input type="checkbox"/> Social Action Fund		

Send card to _____ Address _____

Donated by _____ Address _____

Make checks payable to **Temple Beth Shalom**. Our address is 12202 N 101st Ave, Sun City, AZ 85351. MasterCard and Visa are accepted in the office for donations of \$25 or greater.

*Donations to funds, with the exception of the Rabbi's Discretionary Fund and Endowment Fund, have always been transferred to the general fund at the end of the year if they have not been spent. Currently, these funds may be transferred to the general operating fund if there is a need at any time.

Donations for Temple Funds

Please use this form so that your donation can be properly allocated.

Make check payable to **Temple Beth Shalom** and mail to:
Temple Beth Shalom, 12202 N. 101st Ave., Sun City, AZ 85351

Date: _____ Amount: \$ _____
In Honor of _____ In Memory of _____
In Appreciation of _____ Speedy Recovery _____
Thank you _____ Happy Birthday _____
Happy Anniversary _____ Congratulations _____
Mazel Tov _____ Thinking of you _____

Designated to:

<input type="checkbox"/> General Fund	<input type="checkbox"/> Mattal Library	<input type="checkbox"/> Endowment	<input type="checkbox"/> Prayer Books
<input type="checkbox"/> Education	<input type="checkbox"/> Biblical Garden	<input type="checkbox"/> Choir	<input type="checkbox"/> Security
<input type="checkbox"/> Rabbi's Discretionary Fund	<input type="checkbox"/> Social Action Fund		

Send card to: _____ Address _____

Donated by _____ Address _____

Make checks payable to **Temple Beth Shalom**. Our address is 12202 N 101st Ave., Sun City, AZ 85351. MasterCard and Visa are accepted in the office for donations of \$25 or greater.

*Donations to funds, with the exception of the Rabbi's Discretionary Fund and Endowment Fund, have always been transferred to the general fund at the end of the year if they have not been spent. Currently, these funds may be transferred to the general operating fund if there is a need at any time.

OUR FANTASTIC ADVERTISERS

AUTO REPAIR Exclusively Imports 623-537-5444

DENTIST Martin & Gibbs Family Dentistry 623-535-5488

FINANCIAL ADVISOR Matt Murphy– Murphy Capital Advisors 623-872-3333

GENERAL MAINTENANCE Mike Alvarado Cell: 623-326-2428

INSURANCE Jerome Hammock-State Farm Insurance 623-440-9600

Steve Pomerantz Ins. Agency
(Your Local Medicare Mensch) 623-692-6287

B & N Insurance 602-526-7586 (Medicare Made Easy)

MORTUARIES Sunland Memorial Park 623-933-0161

ORTHOPEDIC/SPORTS PT RISE 623-234-4171 www.riseorthosportspt.com

REAL ESTATE The Property Sisters 623-238-2388
623-229-7900

RESTAURANTS Hole in One Restaurant 623-584-0296

SENIOR LIVING Freedom Plaza 623-815-4013

Inspirata Pointe at Royal Oaks 623-432-9574

TRAVEL Ellen Ventura-Dream Vacations 602-595-9303

VISION SPECIALISTS Eyes West Optical 623-583-0377



Refined Arizona Living



**Call 623-815-4013 today
to schedule your
complimentary visit.**

**We'll proudly show off our
professionally designed
home collection featuring
8 custom floorplans.**

Discover the vibrant lifestyle at Freedom Plaza, offering a full continuum of higher levels of living right on our campus. You will enjoy the small-town charm of friendly neighbors without the hassles of home ownership. Choosing Freedom Plaza means more than a worry-free lifestyle and a beautiful apartment home – it's an investment in a better future. When you join Freedom Plaza, you will gain peace of mind as you begin your exciting, carefree retirement.

Enjoy Shabbat dinners, Passover Seder with Cantor Baruch Koritan, Break fast and Chanukah celebrations, daily fine dining and Sunday Champagne brunch. Our gourmet meals are prepared with the finest ingredients. Holiday menus, birthday and complimentary housewarming parties are sure to delight!

FREEDOM PLAZA



A Life Plan Community




13373 N Plaza del Rio Blvd, Peoria, AZ 85381 | 623-815-4013 | www.freedomplazaarizona.com

Sunland

Memorial Park, Mortuary and Cremation Center



Cemetery Questions?
Ask for Maria Rochelle
Family Service Counselor

 **Call us anytime**
623-933-0161

15826 North Del Webb Blvd
Sun City, AZ 85351



LOCATION

- Flexible event space
- Celebration of Life center
- Flexible chapel space
- Outdoor pavilion
- Multiple chapels
- Custom headstones and markers
- Family estates
- Upright headstones
- Reserved veteran parking
- Pet-friendly
- Large capacity chapel
- Veterans cemetery section
- Mountain views
- Waterside views
- Cemetery spaces available
- Piano/organ on site
- Flat markers
- Mausoleums
- Coffee lounge
- Onsite cemetery

SERVICE

- Catered events
- Outdoor celebrations
- Tribute video production
- Live music available
- Intimate reception area
- Marker unveiling
- Cemetery flower delivery
- Event planning
- Arrangements by phone and email
- Audio and video equipment
- Popular music selections
- Meeting space
- White limousines
- Knowledgeable in Jewish Laws and Traditions

RELIGIOUS & CULTURAL

- Multicultural funerals
- Jewish cemetery section
- Latin music selections

Serving the entire West Valley since 1962



RETIREMENT

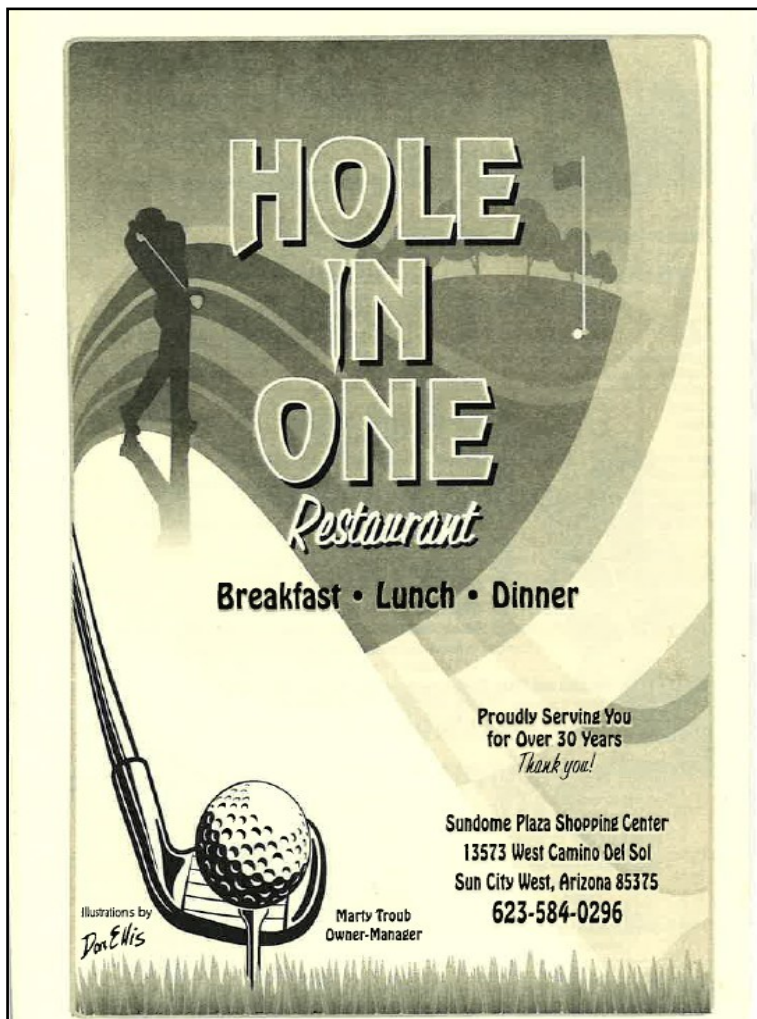
Just the way you want it.

**IF YOU COULD CREATE YOUR
PERFECT RETIREMENT, WHAT
WOULD IT LOOK LIKE?**



With modern, maintenance-free villas and apartment homes that feel like a luxury resort, plus a dog park, sports bar and two new restaurants right at your fingertips, Inspirata Pointe has everything to help you live your perfect retirement. And, we're building it now! Inspirata Pointe, the newest neighborhood coming to Royal Oaks.

Reserve your perfect retirement today. Call 623-432-9574 or visit www.inspiratapointe.com.



Work Guaranteed Free Estimates

General Maintenance

Paint Exterior/Interior, Plumbing Repairs
Drywall Repairs, Electrical Troubleshooting
Sewer/Drain Clean Ups, Doors, Fans
Roofing, Faucets, Coolers, Water Heaters
Fix-ups

Mike Alvarado

Cell: (623) 326 2428

**BOOK A TOUR OR CRUISE WITH
ELLYN VENTURA AND SHE WILL
GIVE BACK \$100/PERSON TO TBS
IN YOUR NAME.**

**BOOK 14 DAYS OR LONGER AND
ELLYN WILL GIVE BACK \$200/
PERSON TO TBS IN YOUR NAME.**

DONATIONS ARE TAX DEDUCTIBLE.



ELLYN VENTURA

Dream Vacations

1-602-595-9303

eventura@dreamvacations.com

eventura.dreamvacations.com

The Property Sisters



Our Company has changed
but **NEVER** the goal.

Sun City Grand Residents

Yvette Kaplan

Realtor®

623-238-2388

YKaplanRealEstate@Gmail.com

Susan Markus

Realtor®

623-229-7900

SMarkusRealEstate@Gmail.com

*West Valley Specialists
For Both Buyers and Sellers!*

Sisters by Chance

Real Estate Partners by Choice

Softball Team Supporters

www.property sistersteamaz.com

TOYOTA/SCION/LEXUS SPECIALISTS

**STOP OVER PAYING AND NOT GETTING
THE SERVICE YOU DESERVE!**



**Also Servicing Subaru,
Honda, Nissan and All
Other Asian Vehicles**

We Guarantee Personalized, Honest and Reliable Service

**EXCLUSIVELY
IMPORTS
AUTO REPAIR**

13365 W. Foxfire Dr. Suites 5 & 6 • Surprise
Open Mon.-Fri. 7:30 a.m.-5:00 p.m.

623-537-5444

www.exclusivelyimportsautorepair.com



- State of the Art Facility
- Factory-Trained Master Technicians
- FREE WI-FI



Family Owned & Operated



Jerome Hammack
STATE FARM
INSURANCE

15278 W Bell Rd Ste. 101

Surprise, AZ 85374

Bus 623 440 9600

Fax 623 242 0623

Jerome.hammack.xeas@statefarm.com

Yourfriendlyneighborhoodagent.com

Eyes West Optical

Eyeglasses—Contact Lenses

Scott Fineman,
Licensed Optician

12801 West Bell Road

Surprise, AZ 85378

623-583-0377

ON PREMISE EYE EXAMS

BY AN INDEPENDENT

DOCTOR OF OPTOMETRY

We Are Proud To Be Providers For:

AVESIS - BC/BS of Arizona - And Others



B&N Insurance LLC

Medicare Made Easy

Bob and Nina Barry
 Licensed Agents



AZ (602) 526-7586

Fax (623) 594-8164

PO Box 11563

Glendale AZ 85318

bob.barry37@gmail.com

Medicare Advantage Plans, Supplements, PDP's & Medicaid

Family Dentistry

Phone: (623) 535-5488

Gary Gibbs, DDS

Patrick Martin, DDS

pmartingibbs@gmail.com | 14044 W Camelback Rd. #200
Fax: (623) 535-5935 | Litchfield Park, AZ 85340



Mark Jagodzinski, PT, DPT, CIDN
Owner/Director of Rise Orthopedic and Sports PT, LLC
12515 West Bell Road, suite 103
Surprise AZ 85378
P 623.234.4171 f 623.234.4173

www.riseorthosportspt.com



 **Pomerantz**
Insurance Agency

Your Local Medicare Mensch

- Medicare Advantage
- Supplemental
- Prescription Drug Plan
 - Life
 - Annuity

Steve Pomerantz

Independent Insurance Broker

623.692.6287

spomerantz.ffl@gmail.com

www.pomerantzinsuranceagency.com



*Truly Comprehensive.
Strictly Fee-Only.*

INVESTMENT ADVISORY | FINANCIAL PLANNING | WEALTH AUDITS



www.murphycapitaladvisors.com

1616 N. Litchfield Rd. • Suite 155 • Goodyear, AZ 85395

Phone: 623-872-3333

Temple Beth Shalom of the West Valley

12202 N. 101st Avenue

Sun City, Arizona 85351

(623) 977-3240

templebethshalomaz@gmail.com

www.tbsaz.org

Affiliated with the Union for Reform Judaism

Rabbi Dana Evan Kaplan, Ph.D.

Baruch L. Koritan, Cantor

Board of Directors

Executive Committee

President:

Stephen Bold

Past President:

Jonathan Werbel

Vice Presidents:

Warren Bentkover 1st VP

Carmen Berkowitz

Sara Jane Feldman

Recording Secretary:

Nan Rubin-Lieber

Treasurer:

Jonathan Green

Parliamentarian:

Russ Robbins

Financial Secretary:

Rich Lieber

Board Members:

Bernie Arum

Gloria Bold

Bea Eisenberg

Steve Hechler

Pam Katz

Russ Robbins

Ellyn Ventura

"Hoods" Presidents:

Roz Goldstein

Dr. Glen Zelkind

Sisterhood President

Brotherhood President

MISSION STATEMENT:

***To fulfill and nurture the spiritual, social
and educational needs of our diverse
Jewish Community.***

SHOFAR DEADLINE REMINDER

The **deadline** for item submission to the Shofar is the **20th of the month**. No articles will be included after the deadline.

Thanks for your cooperation

******SHOFAR******

Patti Weiner-Editor

Helene Fox-Editor

PUBLISHED MONTHLY